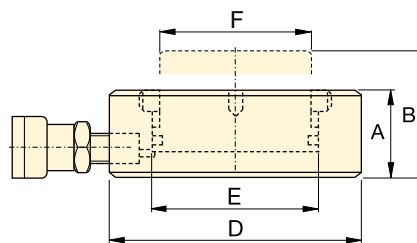


▼ CULP50 Ultra-Flat Cylinder, with Stop Ring



- Up to 4% side load of maximum capacity
- Stop ring for maximum stroke limitation
- Extremely low collapsed height
- Nitrocarburized surface treatment for harsh conditions.

▼ The Ultra-Flat cylinders are designed for applications where high lifting forces are required in confined spaces starting at 1.10 inch.



CULP Series



Capacity:

10 - 100 tons

Stroke:

0.24 inch

Maximum Operating Pressure:

10,150 psi

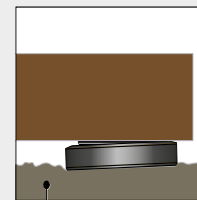


IMPORTANT!

All Ultra-Flat Cylinders require a solid lifting surface for correct support. The use of these flat cylinders on surfaces such as sand, mud or dirt, may result in cylinder damage.



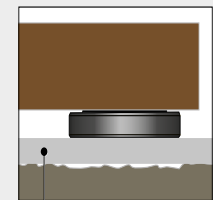
INCORRECT!



Rough soil



CORRECT!



Flat lifting surface

For more safety instructions see our 'Yellow Pages'.


Page: **400**



Hoses

Enerpac offers a complete line of high-quality hydraulic hoses. To ensure the integrity of your system, specify only Enerpac hydraulic hoses.

Page: **136**

Cylinder Capacity @ 10,150 psi	Stroke	Model Number	Cylinder Effective Area	Oil Capacity	Collapsed Height	Extended Height	Outside Diameter	Cylinder Bore Diameter	Plunger Diameter	
tons (maximum)	(in)		(in ²)	(in ³)	A (in)	B (in)	D (in)	E (in)	F (in)	(lbs)
10 (10.9)	0.24	CULP10 ¹⁾	2.15	0.51	1.08	1.32	2.83	1.65	1.49	2.0
20 (22.2)	0.24	CULP20 ¹⁾	4.38	1.04	1.26	1.50	3.54	2.36	2.16	4.0
30 (34.8)	0.24	CULP30 ¹⁾	6.85	1.62	1.38	1.61	4.13	2.95	2.64	6.0
50 (61.8)	0.24	CULP50 ¹⁾	12.17	2.88	1.75	1.99	5.51	3.94	3.54	11.9
100 (121.1)	0.24	CULP100 ²⁾	23.85	5.63	2.55	2.79	7.67	5.51	4.92	25.3

¹⁾ Coupler AR630 including dust cap: use HB7206 hose including AH630 coupler to connect to your pump.

²⁾ Coupler CR400 including dust cap: use HC-Series hose including CH604 coupler to connect to your pump.