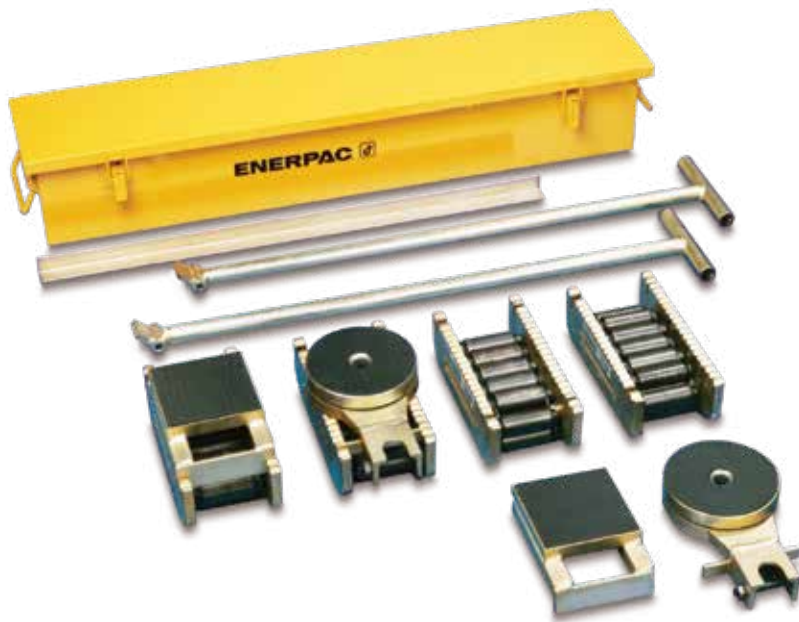


▼ Shown: Set ERS20



## Move Heavy Loads Easily and Safely



Sets (see table) include all components necessary to handle a variety of applications.

Two **ELB1** link-up bars, two **ERH1** handles (34.4 inches long) and one **EMB1** metal box are included.

Optional long handle **ERH2** (46.4 inches) available for 60 and 80 tons only.

- Rugged and sturdy construction for long life
- Low-profile construction for increased stability
- Low rolling-resistance allows for easy transportation
- Attachable load leveling plates and swivel turntables for turning corners.



### Lifting Wedges and Machine Lifts

To place the Load Skates, the load must first be lifted. This can be done easily and safely using the Enerpac Lifting Wedge or Machine Lifts.

Page: 182

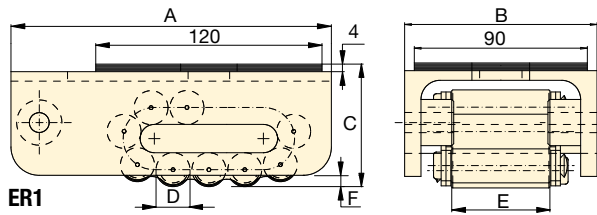
▼ Heavy transport using Load Skates. The machine is first lifted, using the SOH-Series Enerpac Machine Lifts.



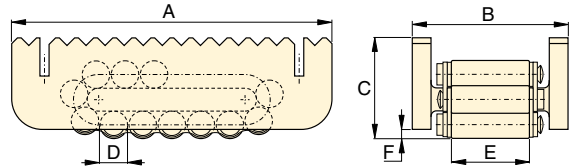
▼ Chemical tank transportation: For the first few inches the load was lifted with an RCS-Series low-height cylinder and then moved on to load skates for transportation.



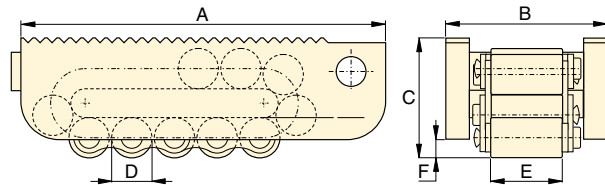
# Heavy Duty Caterroller™ Load Skates



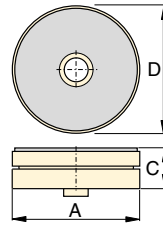
ER1



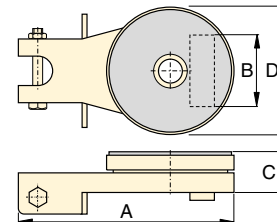
ER10, ER15, ER30



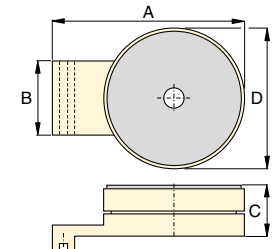
ER60, ER80



ES1,  
Turntable Swivel



ES10, ES15, ES30  
Turntable Swivel



ES60, ES80,  
Turntable Swivel

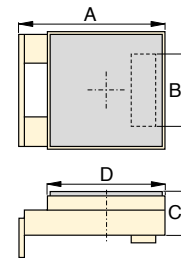
**EL,  
ER,  
ES  
Series**



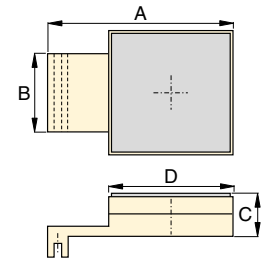
Maximum Carrying Capacity:  
**80 tons**

Load Skates may be ordered separately or as a matched set.

Set Capacity * (tons)	Set Model Number	Load Skates (4x)	Turntable Swivels (2x)	Leveling Plates (2x)	Weight including handles and metal box (lbs)
20	ERS20	ER10	ES10	ELP10	110
30	ERS30	ER15	ES15	ELP15	123
60	ERS60	ER30	ES30	ELP30	167





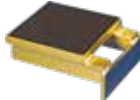


ELP10, ELP15, ELP30  
Leveling Plate



ELP60, ELP80  
Leveling Plate

\* Sets are designed to enable two skates to take full load for extra safety on uneven floor surfaces.

	Capacity (tons)	Model Number	Dimensions (in)						Contact Rolls per Skate	Rollers per Skate	Weight (lbs)
			A	B	C	D	E	F			
<b>Load Skates</b>   ER1   ER10	1	ER1	6.69	3.94	2.56	0.71	2.00	0.24	4	11	8.4
	10	ER10	8.27	3.94	2.63	0.71	2.00	0.24	5	15	11.5
	15	ER15	8.69	4.45	2.95	0.94	2.38	0.39	4	13	16.0
	30	ER30	10.63	5.13	3.63	1.18	2.69	0.39	4	13	28.6
	60	ER60	15.00	6.63	4.94	1.65	3.00	0.63	4	13	70.4
<b>Turntable Swivel</b>   ES1   ES10	1	ES1	8.15	-	1.02	3.54	-	-	-	-	2.4
	10	ES10	8.66	2.87	1.65	5.12	-	-	-	-	8.1
	15	ES15	8.66	3.39	1.65	5.12	-	-	-	-	8.1
	30	ES30	9.84	3.78	1.89	5.91	-	-	-	-	11.7
	60	ES60	10.83	4.49	2.40	7.48	-	-	-	-	30.1
<b>Leveling Plate</b>   ELP10	80	ES80	14.17	5.04	2.40	8.66	-	-	-	-	41.6
	10	ELP10	5.87	2.87	1.65	4.72	-	-	-	-	8.1
	15	ELP15	5.87	3.39	1.65	4.72	-	-	-	-	8.1
	30	ELP30	7.01	3.78	1.89	5.12	-	-	-	-	11.6
	60	ELP60	10.63	4.49	2.40	7.09	-	-	-	-	30.4
	80	ELP80	13.78	5.04	2.40	7.87	-	-	-	-	41.4